

MONTHLY MEMBERSHIP PROGRESS REPORT

LOCATION MICHIGAN

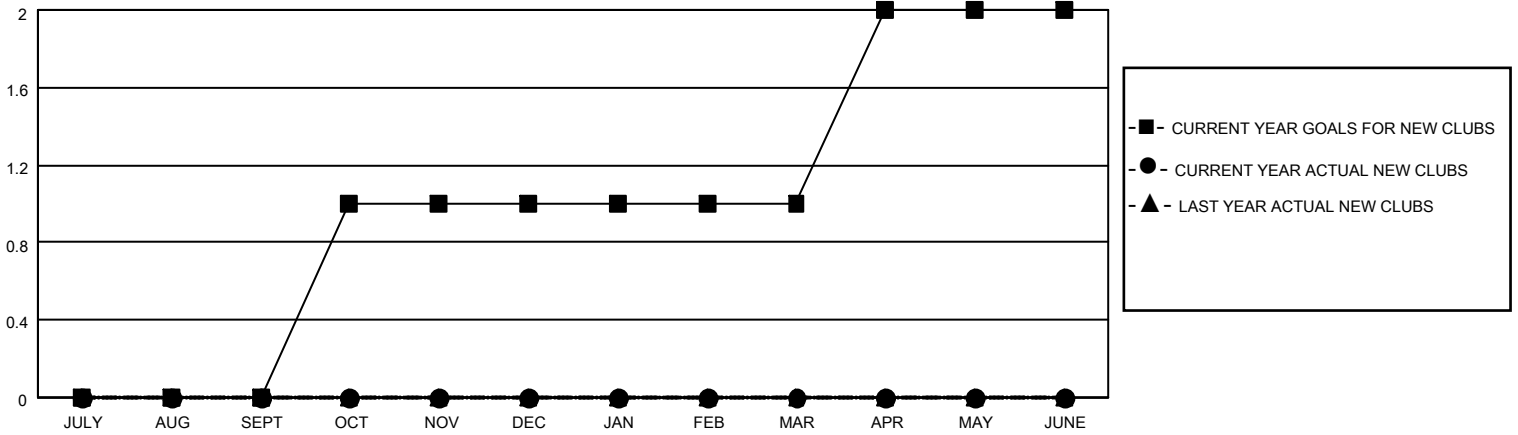
District 11 E2

Results as of: 6/30/2022

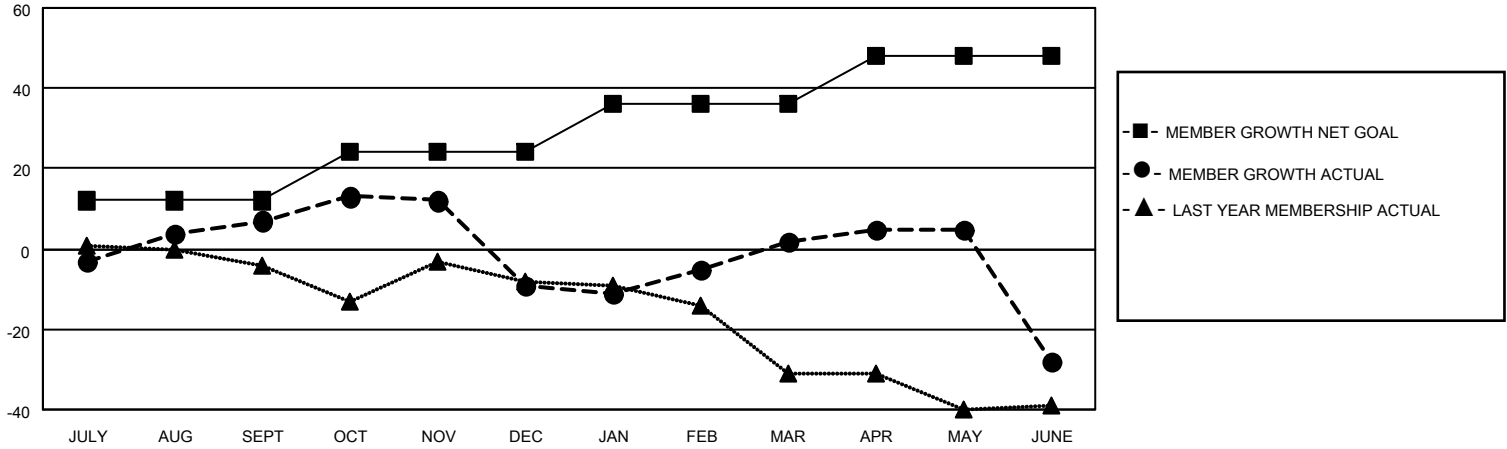
Clubs			
RESULTS FOR 2021-2022			
QUARTER	NEW CLUB GOAL	NEW CLUBS	DROPPED CLUBS
JULY/AUG/SEPT	0	0	0
OCT/NOV/DEC	1	0	0
JAN/FEB/MAR	0	0	1
APR/MAY/JUNE	1	0	0

Members			
RESULTS FOR 2021-2022			
QUARTER	MEMBER GROWTH NET GOAL	MEMBER GROWTH ACTUAL	DROPPED MEMBERS ACTUAL (including transfers)
JULY/AUG/SEPT	12	20	11
OCT/NOV/DEC	12	27	38
JAN/FEB/MAR	12	29	18
APR/MAY/JUNE	12	11	41

GOALS AND ACTUAL NEW CLUBS CUMULATIVE



GOALS AND ACTUAL MEMBERS CUMULATIVE



DROPPED CLUBS: 1

19 CLUBS OF 28 ADDED 1 OR MORE NEW MEMBERS

GENDER DISTRIBUTION

MALE	463 (67.20%)
FEMALE	226 (32.80%)
NON BINARY	0 (0.00%)
PREFER NOT TO ANSWER	0 (0.00%)

DROPPED MEMBERS

[CLICK HERE FOR CUMULATIVE MEMBERSHIP DATA](#)

DECEASED	27
CLUB CANCELLED	0
OTHER	81
TOTAL	108

TOTAL FAMILY UNIT MEMBERS	98
FAMILY MEMBERS PAYING HALF DUES	49